

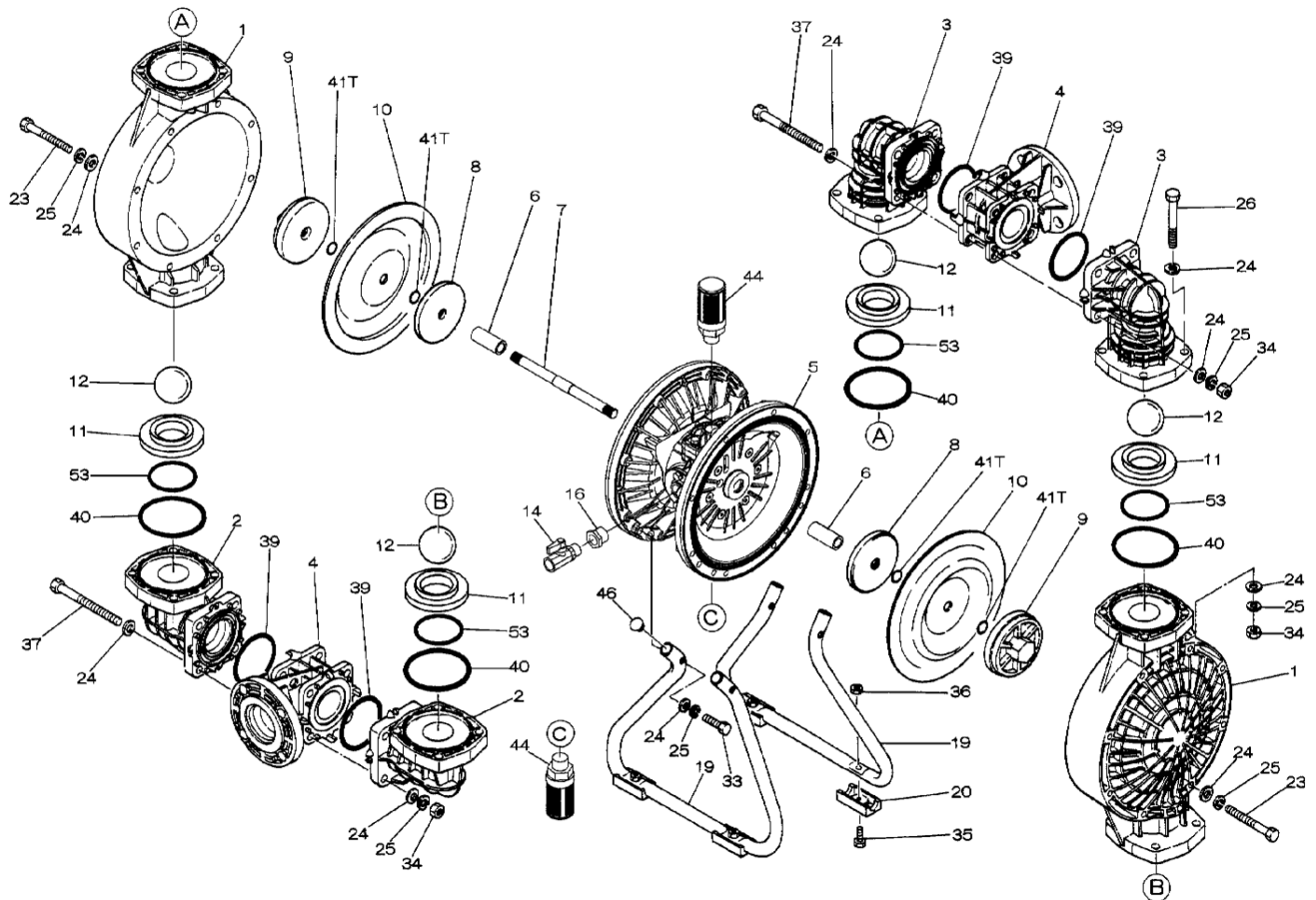
EXPLODED VIEW & PARTS LISTING

Model: DP-40BPT-HD (XDP)



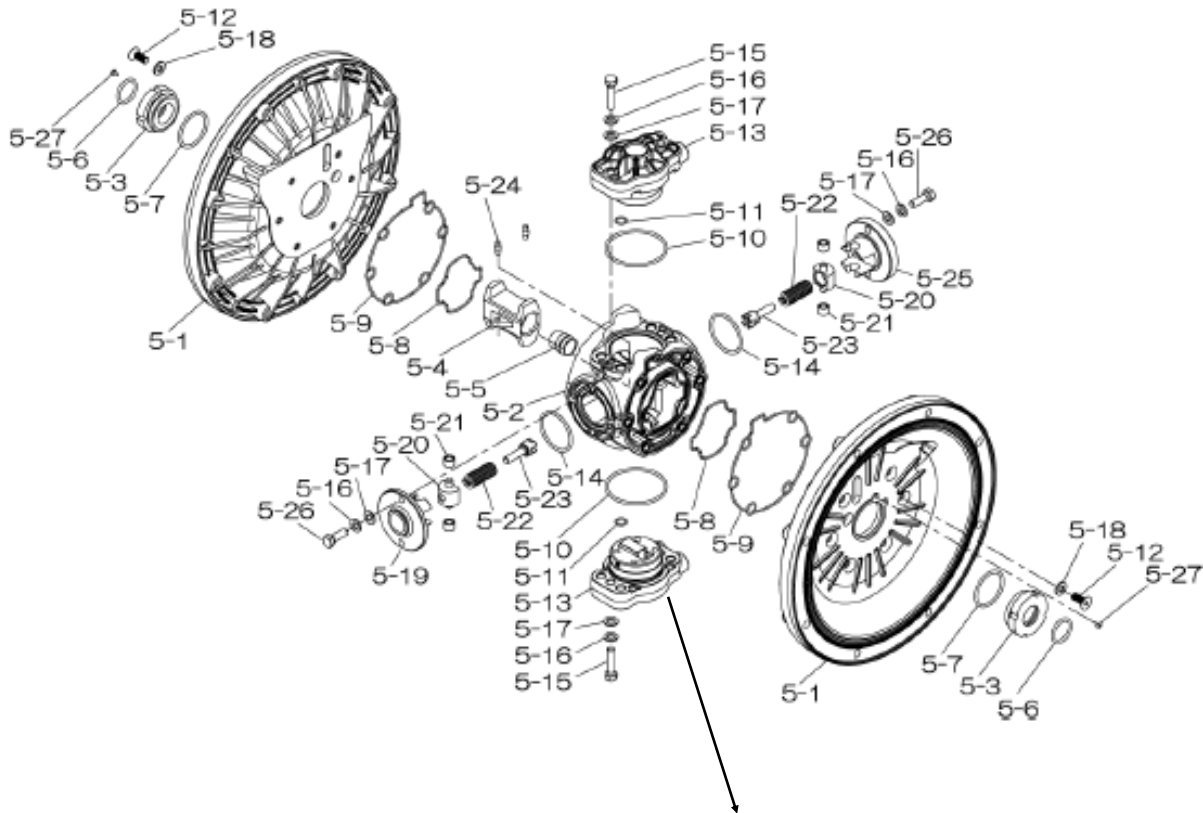
Part#: 854399

Air Operated Double Diaphragm Pump

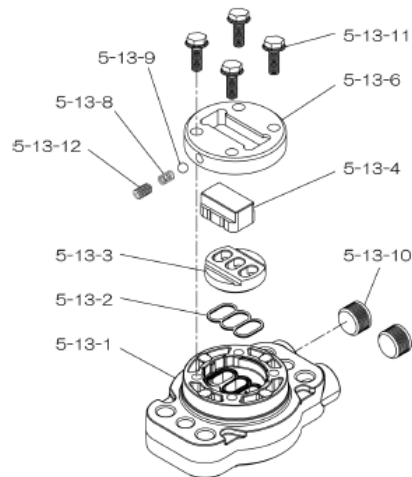


Air Operated Double Diaphragm Pump

804850 Center Body Assembly



804784 Valve Body Assembly

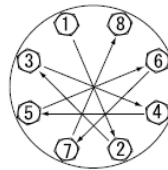


Air Operated Double Diaphragm Pump

REF. No.	PARTS No.	DESCRIPTION	QTY.	REORDER
1	780147	OUT CHAMBER 40PP	2	
2	780244	IN MANIFOLD 40PP	2	
3	780150	OUT MANIFOLD 40PP-2	2	
4	780248	CENTER MANIFOLD 40PP	2	
5	804850	CENTER BODY ASSY DP-40T-HD	1	
5- 1	716215	AIR CHAMBER	2	
5- 2	716256	BODY	1	
5- 3	773095	THROAT BEARING	2	
5- 4	716214	SHUTTLE (CS)	1	
5- 5	773047	CENTER ROD GUIDE	1	
5- 6	640023	O RING	2	
5- 7	640133	O RING	2	
5- 8	773040	GASKET	2	
5- 9	773041	GASKET	2	
5-10	640138	O RING	2	
5-11	640007	O RING	8	
5-12	683812	FLAT SOCKET	12	
5-13	804784	VALVE BODY ASSY	2	
5-13- 1	716244	VALVE BODY	1	
5-13- 2	773042	GASKET	1	
5-13- 3	716246	SEAT (CS)	1	
5-13- 4	773425	BLOCK	1	
5-13- 6	773426	GUIDE PLATE	1	
5-13- 8	706612	SPRING INK	1	
5-13- 9	686271	BALL	1	
5-13-10	772934	PLUG 20/25-PP	2	
5-13-11	602300	TAPPING BOLT	4	
5-13-12	610025	HEX. SOCKET HEAD SCREW	1	
5-14	640134	O RING	2	
5-15	611153	BOLT HEX FT	4	
5-16	631420	SPRING WASHER M8 ZINC	8	
5-17	631013	WASHER FLAT M8	8	
5-18	684987	WASHER	12	
5-19	716249	RETAINER	1	
5-20	713620	SPRING GUIDE	2	
5-21	773067	BUSH	4	
5-22	686303	SPRING	2	
5-23	714446	TRIP ARM	2	
5-24	700231	PIN	2	
5-25	716216	RETAINER	1	
5-26	611149	BOLT	4	
5-27	686337	TAPPING SCREW	2	

REF. No.	PARTS No.	DESCRIPTION	QTY.	REORDER
6	716399	CENTER BUSH	2	
7	716404	CENTER ROD	1	
8	707817	CENTER DISK 40T INNER	2	
9	771726	CENTER DISK 40PP-T	2	
10	770814	DIAPHRAGM (PTFE) 40	2	
11	772096	VALVE SEAT 40PP-2	4	
12	770692	BALL 40T PTFE	4	
14	684321	BALL VALVE 1/2	1	
16	684339	BUSHING	1	
19	711925	STAND 40PP	2	
20	771865	FOOT RUBBER	4	
23	686156	BOLT HEX	16	
24	631330	WASHER FLAT M10 SS	68	
25	680257	SPRING WASHER M10 SS D	44	
26	621183	BOLT HEX P	16	
33	621179	BOLT HEX FT	4	
34	628013	NUT CT SS	24	
35	621149	BOLT HET FT	4	
36	683837	NUT W/ FLANGE	4	
37	683542	BOLT	8	
39	643060	O RING	4	
40	643064	O RING	4	
41T	643015	O RING	4	
44	804697	MUFFLER 20/25PP NEW	2	
46	683641	CAP STAND	4	
53	643136	O RING PTFE	4	
KIT	K40-PT	LIQUID SIDE		
KIT	K45-AM-DP-HD	AIR MOTOR		

Torque Requirements:



Tightening torque for center rod and out chambers.
Center Rod 36 ft-lbf {50 N-m}
Out Chambers 26 ft-lbf {35 N-m}

Tightening torque for manifold retainer bolts.
BPT 15 ft-lbf {20 N-m}

General Tools:

- Socket wrench - 24mm
- Hexagonal box wrench - 5mm, 6mm
- Open-end wrenches - 19mm, 24mm
- Phillips head screw driver

Special Tools:

- Socket (804129) for a guide to remove the throat bearing (sold separately)

Miscellaneous:

- Assembly Oil - Turbine oil none additional class 1 (equivalent to ISO VG32 grade)
- Nuts - M16 x 1.5
- Thread locker
- Urea grease grade (NLGI) No. 2, Shell Alvania Grease S1

Customer Notes

Model #: _____
Description: _____
Serial #: _____
Date Installed: _____
Department Location: _____
Tag/Project: _____